

# SEVEN ROOTS

OF THE CENTENARY

LANDSCAPE OF WINE



Ruta del Vino  
*Riqa Alta*



Old town Haro

If you are reading this guide, you're probably in one of the towns of the Rioja Alta Wine Route. Read on to learn more of the history surrounding the world of wine, and the social, monumental, ethnographic and economic changes brought about by this undeniable protagonist.

In this land, wine is legend and reality. It's no wonder that it homes the greatest number of centennial wineries in the world. Large, small, monumental, artisanal... as many wineries as generations have devoted their life to cultivating and making the wine that gives the land its name. The historical winery quarters, such as the one near the Haro train station, wineries built underground and ancient rock winepresses, present in many of the towns, are proof of this.

**In the towns on the route, you'll discover the unique history surrounding the world of wine and their unique features.**

Although wine is the driving force of the routes, visitors will also find other interesting attractions detailed in this guide.

The Way of St James, which traverses part of this land, is one of example, whe-

re pilgrims witness and experience the remnants of this wonderful ancient past.

**And perhaps, due to the nature of this crossroads and melting pot of cultures, people in these lands are known for their hospitality and generosity with visitors that have come to learn more about their culture and customs.**

Another interesting path to travel is the Romanesque Route, on the western-most area, which harbours epic monuments of a great cultural and heritage value. Romanesque wasn't the only style that left its mark in this area, the legacy of Baroque, Gothic, Plateresque and Renaissance styles lives on in civil and ecclesiastical buildings in these towns. Of the six monasteries found on this itinerary, five are still in use.

All in all, visitors will feel their souls nourished with the vast cultural and artistic heritage; their bodies with the magnificent food and lodging establishments on the way; and their spirit through the relationships and conversation with the locals. We invite you to step into this land and enjoy an unforgettable experience.

# 1

## THE ROUTE OF WINE

HARO  
 OLLAURI  
 BRIONES  
 SAN ASENSIO  
 \*RODEZNO (Annexed)

35.3 km 46 minutes

Haro - Ollauri  
4.9 km 9 minutes

Ollauri - Briones  
6.4 km 9 minutes

Briones - San Asensio  
8.5 km 11 minutes

San Asensio - Haro  
15.5 km 17 minutes

\*Ollauri - Rodezno  
3 Km 5 minutes



Ancient necropolis at the San Asensio vineyards



Vivanco Museum of Wine Culture, Briones



Our first itinerary is inspired by wine, the star of this guide. Although it's present in all the towns on this route, we've drawn a simple and varied itinerary to these five towns.

The starting point of your visit doesn't matter. If starting at Haro, stop by Barrio de La Estación (Railway Quarter), where you'll find the most important group of centennial wineries in the world. The quarter received its name for its proximity to the railway station, which facilitated the international expansion of the product. Nowadays, these wineries produce renowned wines of excellent quality. It is possible to tour these carefully restored facilities.

From here, move on to the rest of the towns. In addition to their own unique features, you'll find traditional wine cellars and historic wineries, where wine was

produced and stored. Some are even being restored for touristic purposes.

We will then visit four unique municipalities, rich in both their underground heritage and surface beauty. Ollauri, Briones, San Asensio, and Rodezno boast a long-standing winemaking tradition, as evidenced by their historic underground cellars and wineries where wine was once produced and stored. Briones is home to one of the most spectacular wine museums in the world, the Vivanco Museum; in Ollauri, you'll find the oldest winery in La Rioja; San Asensio treasures over 250 underground wineries interconnected by labyrinthine passageways; and Rodezno is a privileged enclave of nature and wine, with a stunning wine district overlooking the Sierra Cantabria, where you can enjoy breathtaking sunsets.

# Wine, driving force of this route, has a special and unique meaning here.



Wine Fight, Haro

### HARO / 11,305 people

- Feb. - Mar. - Wine Carnival
- 24 June - Festivities of Saint John
- 29 June - Wine Fight
- 1<sup>st</sup> Sun. Sept. - Fest. Virgen de La Vega

- Barrio de la Estación
- Basílica Virgen de la Vega (10th c.)
- Church of Saint Thomas the Apostle (17th c.)
- Chapel San Felices de Bilibio
- Bendaña Palace (16th c.)

### OLLAURI / 286 people

- Feb. - Month of Wine
- 2<sup>nd</sup> week Sept. - Wine Harvest Market
- 10 Dec. - Fest. Saint Eulalia

- Palace of the Marquises of Terán (17th c.)
- Old winery wine cellars

### BRIONES / 766 people

- June - Medieval Festival
- 3<sup>rd</sup> Sun. Sept. - Fest. Vera Cruz

- Church Virgen de la Asunción (16th c.)
- Ethnographic Museum - La Casa Encantada
- Vivanco Museum of Wine Culture

### SAN ASENSIO / 1,124 people

- April - Pilgrimage to Davalillo
- 15 May - Fest. Saint Isidore the Farmer
- 25 July - Clarete Wine Fight

- Castle & Chapel of Davalillo
- Shrine of Saint Mary of La Estrella (15th c.)

### RODEZNO / 275 people

- 20 Jan. - Fest. Saint Sebastian
- 15 May - Fest. Saint Isidore the Farmer
- 10 July - Fest. Saint Christopher
- Saturday after the Assumption Day - Virgen de Olartia Pilgrimage

- Barrio de los Calados
- Church Virgen de la Asunción (16th c.)
- Chapel Virgen de Olartia

# 2

## LA RUTA DE LOS SILLARES

HARO  
BRIÑAS  
SAN VICENTE DE LA SONSIERRA  
ÁBALOS

34 km. 42 minutos

Haro - Briñas  
4,8 km. 8 minutos

Briñas - San Vicente de la Sonsierra  
8,5 km. 11 minutos

San Vicente de la Sonsierra - Ábalos  
5,9 km. 7 minutos

Ábalos - Haro  
14,8 km. 16 minutos



Hotel Eurostars Los Agustinos, en Haro

El territorio de La Rioja Alta cuenta con numerosas casas solariegas que serán las protagonistas de nuestro segundo paseo. Están construidas con piedras de sillería y son originarias de los siglos XVI, XVII y, en menor medida, del XVIII.

### Las familias nobles de los siglos XVI y XVII mostraban su rango social y distinción a través de las casonas solariegas

La razón de ser de estos singulares edificios fue la de servir de pequeños palacios a familias nobles de la época. Con ellas mostraban su rango y distinción y, hoy, son sede de viviendas, estableci-

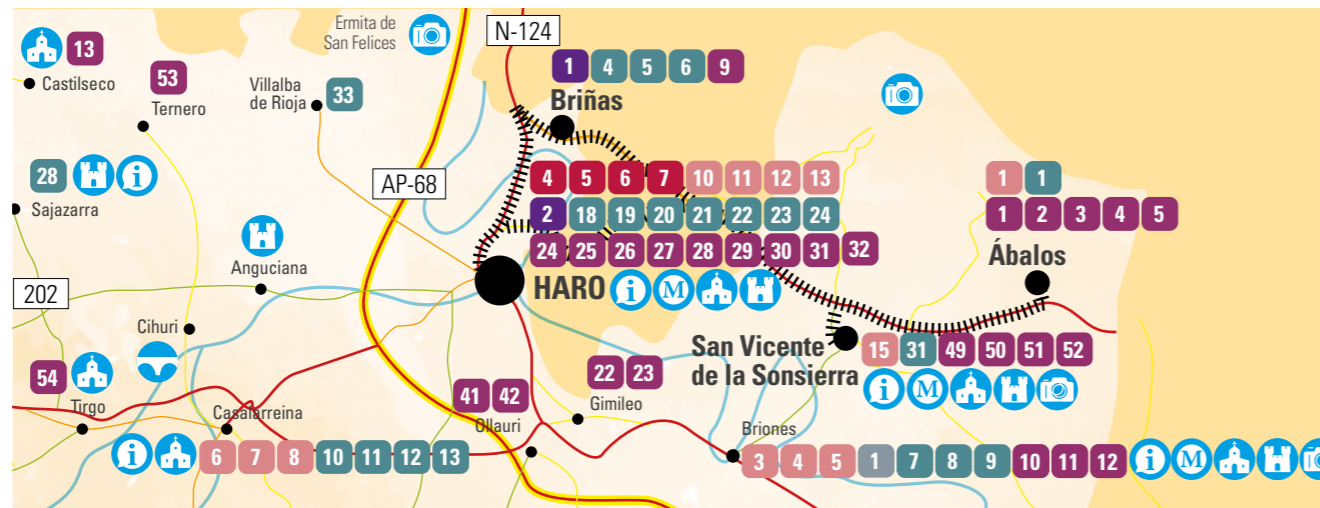
mientos públicos, así como de hoteles y restaurantes que muestran el esplendor de antaño.

Buena parte de los municipios de La Ruta del Vino Rioja Alta, albergan estos majestuosos edificios. En Ábalos, por ejemplo, destacan el palacio del Virrey de Ábalos y la casona del Marqués de Legarda. Briñas, también es sede de numerosas casonas bien conservadas con la bella singularidad de sentir el río Ebro en el interior de sus cimientos. Finalmente, el municipio de San Vicente de la Sonsierra atesora numerosas casonas de este tipo además de un extraordinario puente medieval, construido en el S. XIII y rehabilitado en el S. XVI.



Castillo de San Vicente de la Sonsierra

Las calles flanqueadas por los edificios de sillería trasladan al visitante a otra época



Ábalos cuenta con numerosas construcciones de sillería

**HARO**  
See page 5

**BRIÑAS**  
202 people

Aug. - Fest. Lady of the Assumption  
Sep. - Fest. St Cornelius & St Cyprian

- Chapel El Humilladero (17th c.)
- El Crucero (17th c.)
- Church Virgen de la Asunción (16th c.)
- Winery Quarter

**SAN VICENTE DE LA SONSIERRA**  
1,014 people

Jan. - Fest. St Vincent Martyr  
Easter Week - Los Picaos penance  
15 May - Fest. Saint Isidore the Farmer  
Sept. - Fest. Virgin of Los Remedios

- Chapel of the Vera Cruz
- Medieval Bridge (13th c.)
- Castle - Fortress (12th c.)
- Hermitage Sta. María de La Piscina (12th c.)
- Church Sta. María La Mayor (16th c.)
- Wineries and necropolis

**ÁBALOS**  
249 people

Aug. - Fest. St Stephen Protomartyr  
Sept. - Fest. Virgin of La Rosa  
Sept. - Winery Open House

- Marquis of Legarda Palace
- Ancient winepresses
- Church of St Stephen Protomartyr (16th c.)

# 3

## SMALL MONUMENTAL PARADISE

HARO  
CASALARREINA  
TIRGO  
CUZCURRITA DE RÍO TIRÓN  
SAJAZARRA

30.6 km 46 minutes

Haro - Casalarreina  
7.1 km 11 minutes

Casalarreina - Tirgo  
3.7 km 5 minutes

Tirgo - Cuzcurrita de Río Tirón  
1.3 km 4 minutes

Cuzcurrita de Río Tirón - Sajazarra  
6.6 km 10 minutes

Sajazarra - Haro  
11.9 km 16 minutes



Sajazarra Castle

This itinerary wanders around towns to showcase the magnificent variety and styles found in the different historical buildings.

Romanesque chapels and bridges, 14th and 15th century ecclesiastic buildings, ramparts and fortresses, and noble manors owned by the wealthy families of old ages are a large part of the treasures that visitors will find in these five towns.

town also is home to the church of San Martin, the Pobes Palace and the Palace of the Constables of Castile. Two important 10th and 12th century buildings in Tirgo are the Monastery of Santa María and the Romanesque Church of El Salvador.

Stroll down the narrow streets of Cuzcurrita de Río Tirón, flanked by ashlar buildings, and observe the strategic



Monastery of Nuestra Señora de La Piedad, Casalarreina

Strolling around these towns is enjoying the magnificent variety and styles of its buildings.

In Casalarreina, the Dominican Monastery of La Piedad is worth visiting. With its Isabelline Gothic and Plateresque styles, it was declared 'Conjunto Histórico' (a conservation area) in 1975. This

orientation of its buildings. Then, visit the majestic Velasco Castle.

Finish at Sajazarra where, after walking around the quaint and beautiful old town, you can see its impressive rampart (13th c.), the medieval arch (the only one remaining of the initial four), and a unique fully-restored 15th century castle.



**HARO**  
See page 5

**CASALARREINA**  
1,145 people

June - Wine Fight (Sanjuanada)  
Aug. - Ancient Music Festival  
Sep. - Gracia Festival  
Nov. - Fest. Saint Martin

- Monastery Sta. M<sup>o</sup> de La Piedad (16th c.)
- Palace of the Constables of Castile (16th c.)
- Pobes Palace (18th c.)

**TIRGO**  
186 people

Aug. - Fest. El Salvador  
Aug. - Fest. Virgin & St Roch

- Monastery Sta. M<sup>o</sup> of Tirgo (10th c.)
- Church El Salvador (12th c.)
- Ashlar houses and shields of the 17th and 18th c.

**CUZCURRITA DE RÍO TIRÓN**  
488 people

Pentecost Day - Fest. Virgin of Tironcillo  
May - Fest. of Tironcillo  
Sep. - Fest. St Michael the Archangel

- Velasco Castle (15th c.)
- Church of San Miguel (18th c.)
- Chapel Virgen de Tironcillo (18th c.)
- Chapel of Sorejana (13th c.)

**SAJAZARRA**  
130 people

April - Fest. Saint Marcus  
Aug. - Fest. Virgen de Cillas

- Castle-Palace (15th c.)
- Rampart ruins (13th c.)
- Church Virgen de la Asunción (12th c.)



Teatrísso Hotel, Cuzcurrita de Río Tirón

# 4

## BETWEEN VINEYARDS AND HISTORY

CENICERO  
URUÑUELA  
HUÉRCANOS  
NAVARRETE

37.5 km 41 minutes

**Cenicero - Uruñuela**

7.9 km 9 minutes

**Uruñuela - Huércanos**

2.2 km 4 minutes

**Huércanos - Navarrete**

14.7 km 13 minutes

**Navarrete - Cenicerero**

12.7 km 15 minutes



Romanesque cemetery arch in Navarrete



Vineyards irrigated by the Ebro river in Cenicerero

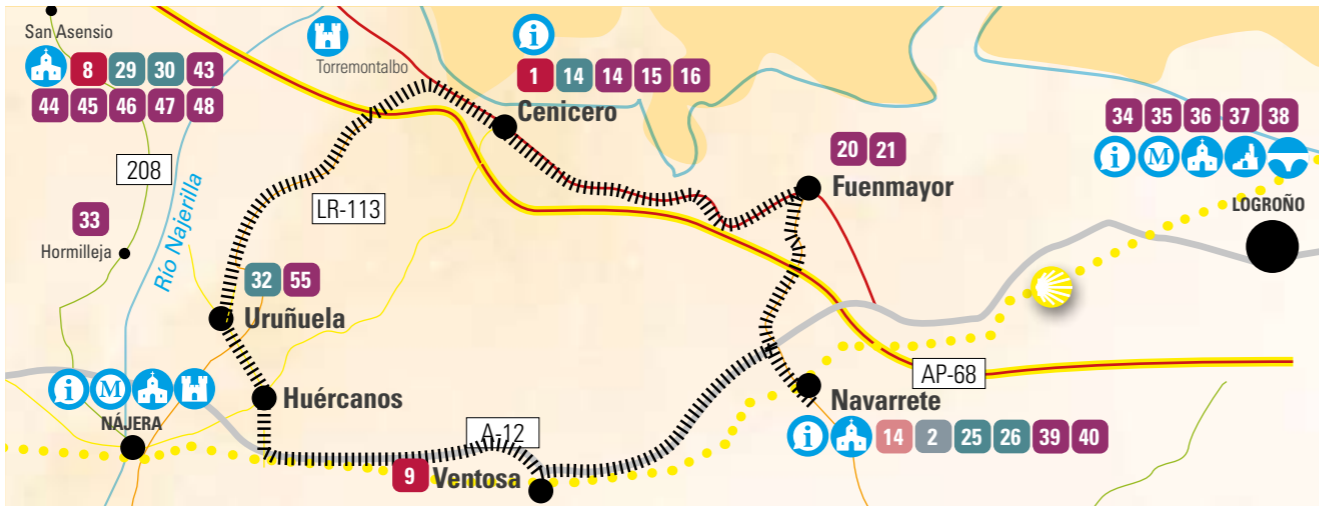
Cenicero has one of the longest wine traditions in the area. In fact, a large part of its economy is based on grape cultivating, wine making and its surrounding industry. Centennial wineries and traditional wine cellars are scattered around the town, and coexist with Celt, Iberian and Roman archaeological sites, that prove its long history.

Following this fourth route, we reach two nearby towns nestled in a dense landscape of vineyards, whose main representatives are two renowned winemaking cooperatives. In terms of heritage, Uruñuela boasts the Church of San Servando and San Germán, where visitors can admire four beautiful Rococo altarpieces crafted from wood. Meanwhile, in Huércanos, the Church of San Pedro and various manor houses are well worth a visit.

Then, the itinerary will take you to Navarrete, the quintessential pottery town, the only one remaining in La Rioja. Tradition and connections to pottery are displayed in the existing factories (most of them, from the 1980s), as well as in art pieces, such as the sculpture 'Homenaje al alfarero' (A tribute to potters) by the Riojan artist Óscar Cenzano. The town also hosts the annual pottery fair NACE.

In addition to this professional and economic speciality that permeates the town, Navarrete has incredible heritage buildings from the 16th, 17th and 18th centuries with prominent heraldic and iron fittings. Worth mentioning is the cemetery entrance, in Late Romanesque style, one of the few left in La Rioja.

All the towns have heritage jewels that are worth seeing.



### CENICERO

2,036 people



Mar. - Fest. St Joseph  
Easter Week - Burning of Judas  
May - Fest. Saint Isidore the Farmer  
Oct. - Fest. St Daria



- Church of San Martín (16th c.)
- El Crucero (17th c.)
- Chapel Virgen del Valle (18th c.)

### URUÑUELA

988 people



Feb. - Fest. San Ignacio y Las Candelas  
May - Fest. Saint Isidore the Farmer  
Aug. - Fest. Virgen del Patrocinio



- Church San Servando & San Germán (16th c.)
- Chapel Virgen del Patrocinio (18th c.)

### HUÉRCANOS

818 people



Feb. - Fest. St Matthias  
July - Vicoca Fair/Fest. St Pantaleon  
Oct. - Fest. Virgen del Pilar



- Church of San Pedro (16th c.)
- Territorial column (15th c.)
- Church of San Pantaleón (16th c.)

### NAVARRETE

3,040 people



July - NACE (National Pottery & Ceramics Fair)  
Aug. - Fest. of Assumption & St Roch  
July - Fest. of Las Santitas



- Church Sta. M<sup>o</sup> de La Asunción (16th c.)
- Romanesque cemetery arch (12th c.)
- Ruins of the Hospital San Juan de Acre (12th c.)
- Ignatian Way



Navarrete is known for its pottery tradition

# 5

## WINE AND CUISINE ON THE WAY OF ST JAMES

LOGROÑO  
NAVARRETE

\*FUENMAYOR (Annexed)  
NÁJERA

59 km 55 minutes

Logroño - Navarrete  
13.9 km 16 minutes

\*Navarrete - Fuenmayor  
5.1 Km 8 minutes

Navarrete - Nájera  
17.2 km 15 minutes

Nájera - Logroño  
27.9 km 24 minutes



People socialising on calle Laurel, Logroño

The bustling calle Laurel heralds a route full of wineries and wonderful food.

If the Way of Saint James didn't already cross La Rioja, it would need to be re-routed. The hospitality of the people in this area is an example for visitors and pilgrims alike.

When travellers arrive to Logroño from Navarra, they cross the stone bridge over the Ebro river. There, they catch a glimpse of the city's skyline, dominated by the must-sees: the church of Santa María de Palacio, the co-cathedral of Santa María de la Redonda, and the church of Santiago. Making a culinary stop at the most famous *pincho* and *tapas* streets (calle Laurel, calle San Juan and its vicinities, as well as some of the wineries in the capital of La Rioja) is mandatory.

The next stop is Nájera, commonly known as the 'furniture capital', due to its manufacturing and furniture sale businesses. This town and its region also have agriculturally-based activities, especially vineyard-oriented. Regarding patrimonial buildings, the Monastery of Santa María La Real is worth a visit. Built by king García Sánchez III in the 10th century, it became an episcopal see and a royal mausoleum.



Pilgrims rest in Navarrete

From there, continue your path by following the steps of the thousands of pilgrims that pass through here each year. First, visit the pottery town of Navarrete (route 4), one of the milestones in the Way of St James and the Ignatian Way. Then, continue on to Fuenmayor, an important wine-making town with vast vineyards, fundamental to their economy, and wineries—not to be missed.



A pilgrim crosses the stone bridge into Logroño

### LOGROÑO

151,113 people



Jan. - 'Actual' Festival  
June - Fest. St Barnabas  
Sep. - Fest. St Matthew  
'Festival of the Grape Harvest'



- Calle Laurel, calle San Juan
- Co-cathedral of Sta. M<sup>o</sup> de la Redonda (16th c.)
- Church of San Bartolomé (12th c.)
- Fortification of Revellín (15th c.)
- Plaza de Abastos
- Church Sta. M<sup>o</sup> de Palacio (16th c.)

### NAVARRETE

See page 11

### NÁJERA

8,047 people



Jan. - Fest. Saint Anthony  
Easter Week - Furniture Fair  
April - Fest. Saint Prudentius  
June - Fest. Saint John & Saint Peter  
Sep. - Fest. San Juan Mártir & Santa María la Real  
Oct. - Fest. Saint Michael



- Historical quarter
- Museo Najerillense
- Church of Santa Cruz (17th c.)
- Monastery Sta. María La Real (11th c.)

### FUENMAYOR

2,278 people



June - Fest. Saint John  
July - Craftsmanship & Wine Festivity  
Dec. - Fest. Los Marchos



- Church Sta. María (16th c.)
- Bridge of Christ (16th c.)
- House Navajas (16th c.)
- Chapel of Christ (17th c.)

# 6

## THE ROUTE OF THE MONASTERIES

NÁJERA  
 BADARÁN  
 SAN MILLÁN DE LA COGOLLA  
 CAÑAS  
 SAN ASENSIO  
 \*CASALARREINA (Annexed)

60 km 71 minutes

Nájera - Badarán  
10 km 14 minutes

Badarán - San Millán de la Cogolla  
7 km 10 minutes

San Millán de la Cogolla - Cañas  
8.8 km 11 minutes

Cañas - San Asensio  
22 km 22 minutes

San Asensio - Nájera  
12 km 13 minutes

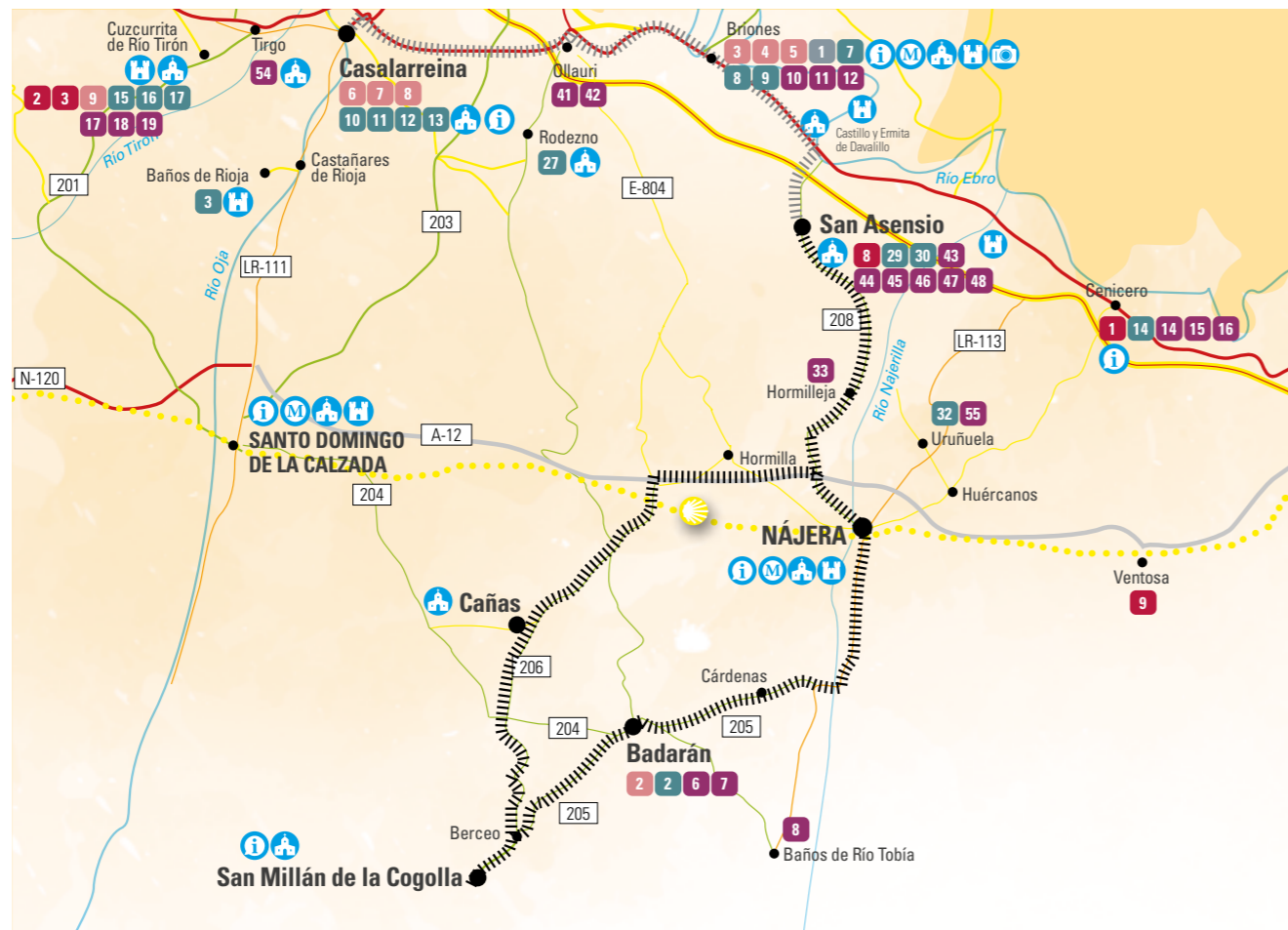
\*San Asensio - Casalarreina  
21 km 18 minutes



Cistercian Abbey, 12th century, Cañas



Yuso Monastery, birthplace of Castilian, San Millán de la Cogolla



Cloister of the Monastery of Santa María la Real, Nájera

Few valleys have the same patrimonial wealth as the valley of the Cárdenas river. The itinerary starts at the main town in the region, Nájera, where you can visit the Monastery of Santa María la Real. Built by king García Sánchez III and finished in 1052, it's a mixture of Baroque, Late Gothic and early Renaissance styles. Its royal mausoleum houses the twelve graves of two different dynasties (Abarcas and García Ramírez). The Cloister of the Knights is the burial site of many noblemen.

**The Yuso and Suso Monasteries are World Heritage Sites and the birthplace of the Castilian language. The first words in this language were written there.**

From here, cross the towns of Badarán and Berceo to reach San Millán de la Cogolla. Its twin monasteries Yuso and Suso were declared World Heritage Sites and birthplace of the first words in Castilian, written by the most famous

poet of the valley, Gonzalo de Berceo. Suso (upper) was built on the site where eremites, disciples of Saint Emilian, lived in the 6th century. Yuso (lower) was an addition to Suso in the 11th century, rebuilt during the 16, 17 and 18th centuries. They're a mix of styles, mainly Renaissance and Baroque.

**Few valleys have the same patrimonial wealth and beauty as the valley of the Cárdenas river.**

These impressive buildings hold great treasures, such as a library still furnished as at the end of the 17th century. The library and the archive are considered some of the best in Spain.

The itinerary ends at the Cistercian Abbey of Cañas, started in the 13th century. Its main entrance was finished in the 18th century. Some of the highlights of this abbey are the church, the great Renaissance reredos and the doorway to the chapter house.

**NÁJERA**  
See page 13

**BADARÁN**  
502 people

Aug. - Fest. Virgin of Assumption & St Roch

Aug. - Theatre Festival 'Badarán que hablar'

Sep. - Gracia Festival

- Prehistoric & Roman settlements
- Church of La Expectación (17th c.)

**SAN MILLÁN DE LA COGOLLA**  
222 people

Pentecost - Pilgrimage to the Monastery of Valvanera

July - Fest. Virgen del Carmen

Sep. - Fest. La Traslación

Nov. - Fest. Saint Emilian

- Monasteries of Yuso (11th c.) & Suso (6th c.)
- Chapel of Santa Potamia

**CAÑAS**  
97 people

May. - Fest. Saint Mary

Sep. - Fest. of Giving Thanks

Sep. - Pilgrimage to Sto. Domingo de Silos

Dec. - Fest. Sto. Domingo de Silos

• Cistercian abbey (13th c.)

**SAN ASENSIO**  
See page 5

**CASALARREINA**  
See page 9



# 7

## THE ROMANESQUE ROUTE

TIRGO  
CASTILSECO  
VILLASECA  
TREVIANA  
CUZCURRITA DE RÍO TIRÓN

35 km 36 minutes

**Tirgo - Castilseco**

8.9 km 8 minutes

**Castilseco - Villaseca**

2.8 km 4 minutes

**Villaseca - Treviana**

12.4 km 13 minutes

**Treviana - Tirgo**

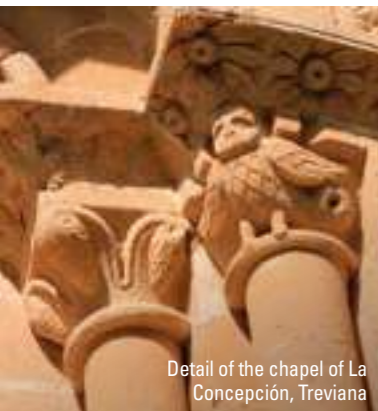
11 km 11 minutes

**Tirgo - Cuzcurrita de Río Tirón**

1.3 Km 3 minutes



Church of San Román, Villaseca



Detail of the chapel of La Concepción, Treviana



Enjoy Treviana and its Romanesque Centre as the starting point of this itinerary and a place to gather more information. To get the most out of this region of the Rioja Alta Wine Route, visit the screenings, exhibits, stonework pieces and educational workshop spaces.

### The pilgrimage to Santiago de Compostela allowed the Romanesque to spread rapidly.

With the silence that dominates the Romanesque style, head to the town of Castilseco, where you can visit the church of San Julián, a small temple with particularly beautiful nave and chancel, with a semi-circular apse.

From there, stop at Villaseca, home of the church of San Román, the best and most complete example of Romanesque from Santo Domingo de la Calzada. It's a beautiful temple in Riojan Romanesque style from the 12th century with a wonderful apse. Under the main square there is a necropolis with graves, which may indicate that the cemetery was located around a larger temple.

Continue on to Treviana to the chapel of La Concepción, a quaint unfinished Romanesque building that was recently restored. The ending point is Cuzcurrita de Río Tirón and its beautiful chapel of Sorejana, built in the 13th century and extended in the 16th century with three Gothic sections. In 1981 it was declared 'Bien de Interés Cultural' (Cultural Interest Asset).



Church of San Julián, Castilseco

#### TIRGO

See page 9

#### CASTILSECO

14 people



Jan. - Fest. Saint Julian and Basilissa



- Church of San Julián (12th c.)
- Ancient chapel of San Martín

#### VILLASECA

45 people



- Church of San Román (12th c.)
- Fortified entrance arch
- Chapel of Virgen de la Cuesta

#### TREVIANA

168 people



Apr. - Fest. St Mark. Pilgrimage to the chapel of Junquera

Aug. - Gracia Festival

Sep. - Virgen de la Junquera

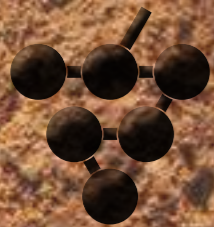


- Chapel of San Pedro or La Concepción (12th c.)
- Romanesque centre

#### CUZCURRITA DE RÍO TIRÓN

See page 9

# ESTABLISHMENTS



Ruta del Vino  
*Rioja Alta*

# EXPERIENCIAS

**BODEGA CALADO 1880** 1  
C/Travesía Centro, 1  
(Cenicero)  
Telf. 630 424 012  
[www.facebook.com/Bodega-Calado-1880](http://www.facebook.com/Bodega-Calado-1880)

**GLOBOS ARCOIRIS** 2  
Carretera N-232. Km 459  
(Cuzcurrita de Río Tirón)  
Telf. 696 489 632  
[www.globosarcoiris.com](http://www.globosarcoiris.com)

**LA BODEGA DEL TESORO** 3  
C/Cuevas, 45  
(Cuzcurrita del Río Tirón)  
Telf. 607 214 989  
[www.labodegadeltesoro.com](http://www.labodegadeltesoro.com)

**GRAPE AVENTURA** 4  
Pol. Industrial Fuenteciega  
C/ Acacias, 124 (Haro)  
Telf. 681 000 042  
[www.grapeaventura.com](http://www.grapeaventura.com)

**LÁCTEOS MARTÍNEZ – QUESO LOS CAMEROS** 5  
Polígono Industrial Fuente Ciega.  
Los Nogales, 55 (Haro)  
Telf. 941 310 940  
[www.loscameros.es](http://www.loscameros.es)

**OJA SPORT** 6  
Linares Rivas, 44 bajo (Haro)  
Telf. 941 305 614 / 607 449 650  
[www.ojasport.com](http://www.ojasport.com)

**RIOJA RENT A CAR** 7  
C/ Las Acacias, 80 (Haro)  
Telf. 941 304 974  
[www.haromotor.com](http://www.haromotor.com)

**RIOJA WINE TRIPS** 8  
C/Camino de la Manzanera, 1  
(San Asensio)  
Telf. 652 726 119  
[www.riojawinetrips.com](http://www.riojawinetrips.com)

**EXPLOTACIONES APÍCOLAS CAMPO MIEL** 9  
C/San Roque nº 12 (Ventosa)  
Telf. 606 120 088  
[www.campomiel.com](http://www.campomiel.com)

# RESTAURANTS

## 1 VILLA DE ÁBALOS

Plaza Fermín Gurbindo, 2  
(Ábalos)  
Telf. 941 334 302 / 649 841 746  
www.hotelvilladeabalos.com

## 2 CONDE DE BADARÁN

Ctra. San Millán, 1 (Badarán)  
Telf. 941 367 055  
www.condedebadaran.com

## 3 ALLEGAR

C/ Concepción, 37 (Briones)  
Telf. 941 991 599  
reservas@santamariabriones.com  
www.santamariabriones.com

## 4 LOS CALAOS DE BRIONES

C/ San Juan, 13 (Briones)  
Telf. 941 322 131  
www.loscalaosdebriones.com

## 5 VIVANCO

Ctra. Nacional, 232 (Briones)  
Telf. 941 322 323  
www.vivancoculturadevino.es

## 6 ENTRERAÍLES

C/ Escuelas, 5 (Casalarreina)  
Telf. 941 139 357  
www.entrerailles.es

## 7 LA VIEJA BODEGA

Avenida de La Rioja, 15  
(Casalarreina)  
Telf. 941 324 254  
www.viejabodega.es

## 8 LUMBRE

Travesía Jardines, 15  
(Casalarreina)  
Telf. 941 324 122  
www.lumbrerestaurante.com

## 9 OTIUM RESTAURANTE

Ctra. LR-111 Km 36.  
Natura Resorts (Casalarreina)  
Telf. 941 565 000  
www.natura-resorts.com

## 10 AKER

C/ Aguardienterías, s/n  
(Cuzcurrita de Río Tirón)  
Telf. 941 301 799 / 619 821 870  
www.asadoraker.com

## 11 ARROPE

C/ Virgen de la Vega, 31 (Haro)  
Telf. 941 304 025  
www.restaurantearrope.com

## 12 BEETHOVEN

C/ Santo Tomás, 8 (Haro)  
Telf. 652 112 641  
www.beethovenharo.com

## 13 EL CLAUSTRO DE LOS AGUSTINOS

C/ San Agustín, 2 (Haro)  
Telf. 941 311 308  
www.eurostarslosagustinos.com

## 14 NUBLO

C/ Plaza San Martín, 6 (Haro)  
Telf. 636 725 850  
www.nublorestaurant.com

## 15 EL FIGÓN DEL DUQUE

Plaza Mayor (Plaza del Hundido)  
(Navarrete)  
Telf. 941 124 094  
www.elfigondelduque.com

## 16 CASA TONI

C/ Zumalacárregui, 27  
(San Vicente de la Sonsierra)  
Telf. 941 334 001 / 696 949 292  
www.casatoni.es

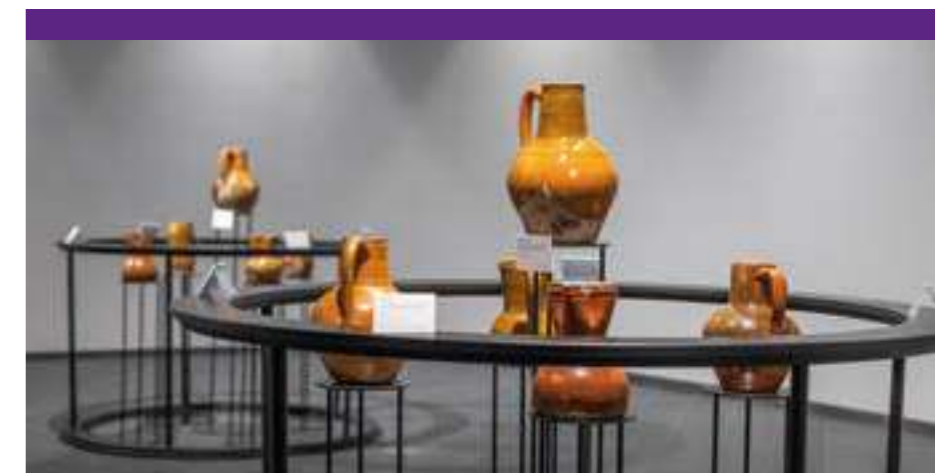
## 1 JUNGUITU ¿HABLAMOS DE VINO?

Avda. Portal de La Rioja, 2 (Brías)  
Telf. 941 303 486  
www.junguitu.com

## 2 SELECCIÓN VINOS ISABEL GUTIÉRREZ ORTIZ

Plaza de la Paz, 5 (Haro)  
Telf. 941 303 017

# WINE CELLARS



# MUSEUMS

## 1 MUSEO VIVANCO DE LA CULTURA DEL VINO

Ctra. Nacional, 232 (Briones)  
Telf. 941 322 323  
www.vivancoculturadevino.es

## 2 MUSEO DE CERÁMICA - BODEGAS FYA

Ctra. de Navarrete a Entrena LR-137 Km1'5 (Navarrete)  
Telf. 941 560 560  
www.bodegasfya.com

# LODGINGS

## 1 HOTEL RESTAURANTE VILLA DE ÁBALOS

Plaza Fermín Gurbindo, 2 (Ábalos)  
Telf. 941 334 302 / 649 841 746  
www.hotelvilladeabalos.com

## 2 HOTEL CONDE DE BADARÁN

Ctra. San Millán, 1 (Badarán)  
Telf. 941 367 055  
www.condedebadaran.com

## 3 CASA RURAL MEDIEVAL TORRE FUERTE SIGLO XIII

C/ Mayor, 8 (Baños de Rioja)  
Telf. 941 300 193  
www.torrefuerterural.com

## 4 CASA RURAL LEGARDA

C/ Real, 17 (Briñas)  
Telf. 653 874 394 / 683 244 817  
www.casadelegarda.com

## 5 HOSPEDERÍA SEÑORÍO DE BRIÑAS

C/ Señorío de Briñas, 5 (Briñas)  
Telf. 941 304 224  
www.hotelesconencantodelarioja.com

## 6 HOTEL PORTAL DE LA RIOJA

Avda. Portal de La Rioja, 2 (Briñas)  
Telf. 941 311 480  
www.portaldelarioja.com

## 7 CASA RURAL EL MESÓN

Travesía de la Estación, 3 (Briones)  
Telf. 941 322 178 / 670 300 248  
www.elmesonbriones.es

## 8 HOTEL LOS CALAOS DE BRIONES

C/ San Juan, 13 (Briones)  
Telf. 941 322 131  
www.loscalaosdebriones.com

## 9 HOTEL SANTA MARÍA DE BRIONES

C/ Concepción, 37 (Briones)  
Telf. 941 991 599  
www.santamariabriones.com

## 10 HOSPEDERÍA SEÑORÍO DE CASALARREINA

Plaza Santo Domingo Guzmán, 6 (Casalarreina)  
Telf. 941 324 730  
www.alojamientosconencantodelarioja.com

## 11 HOTEL ENTRERAILES

C/ Escuelas, 5 (Casalarreina)  
Telf. 941 139 357  
www.entrerailles.es

## 12 HOTEL VALLE DEL OJA

Avenida de La Rioja, 170 (Casalarreina)  
Telf. 671 690 830  
www.hotelvalledeloja.com

## 13 NATURA RESORTS

Carretera LR-11Km 36. (Casalarreina)  
Telf. 941 565 000  
www.natura-resorts.com

## 14 APTOS. TURÍSTICOS RIOJA VALLEY

C/Majadilla Alta, 1 (Cenicero)  
Telf. 661 290 063  
www.riojavalley.es

## 15 APTOS. RIVERA DEL TIRÓN

C/ Las Cuevas-Urbanización Los Lagares, 50  
(Cuzcurrita de Río Tirón)  
Telf. 616 494 945  
www.riveradeltiron.com

## 16 CASA RURAL LA VIÑA

C/ Carnicerías, 15 (Cuzcurrita de Río Tirón)  
Telf. 662 493 391 / 606 400 053  
www.casarural-lavina.com

## 17 TEATRISO HOTEL PALACIO

C/ Segundo Cantón, 15  
(Cuzcurrita de Río Tirón)  
Telf. 941 327 453 / 697 922 452  
www.teatrisso.com

## 18 APTOS. TURÍSTICOS BEETHOVEN

Plaza de la Iglesia, 9 (Haro)  
Telf. 652 112 641  
www.beethovenharo.com

## 19 HOTEL ARROPE

C/ Virgen de la Vega, 31 (Haro)  
Telf. 941 304 025  
www.hotelarrope.com

## 20 HOTEL PLAZA DE LA PAZ

Plaza de la Paz, 2 (Haro)  
Telf. 941 266 545  
www.hotelplazadelapaz.com

## 21 H. EUROSTARS LOS AGUSTINOS 4\*

C/ San Agustín, 2 (Haro)  
Telf. 941 311 308  
www.eurostarslosagustinos.com

## 22 PURA CEPA URBAN SUITES

C/ Esteban de Ágreda, 3 (Haro)  
Telf. 680 580 936  
www.puracepasuites.com

## 23 TINTO DREAMS HOSTEL

C/ Ventilla, 30 1º (Haro)  
Telf. 605 438 091  
www.tintodreamshostel.com

## 24 WINE & SOUL SUITES

C/ Virgen de la Vega, 2 (Haro)  
Telf. 689 487 986  
www.wineandsoulsuites.com

## 25 BODEGA HOTEL FyA

Ctra. de Navarrete a Entrena LR-137 Km1'5  
(Navarrete)  
Telf. 941 560 560  
www.bodegasfy.com

## 26 POSADA IGNATIUS

Plaza del Arco, 4 (Navarrete)  
Telf. 941 124 094  
www.posadaignatius.com

## 27 CASA RURAL EL MIRADOR DE ELOÍSA

C/ Carramolino, 10 (Rodezno)  
Telf. 699 302 760  
www.elmiradordeeloisa.es

## 28 HOTEL POSADA DE SAJAZARRA

C/ Duro, 3 (Sajazarra)  
Telf. 626 083 596  
www.posadadesajazarra.com

## 29 HOTEL RURAL MAR DE VIÑAS

Camino Valpierre, 1 (San Asensio)  
Telf. 640 370 733  
www.hotelruralmardevinas.com

## 30 HOTEL LA CAPELLANÍA

C/ Cofradía de la Santa Veracruz, 14  
(San Asensio)  
Telf. 941 457 660  
www.hotelcapellania.com

## 31 HOTEL CASONA DEL BOTICARIO

C/ Avda. de La Rioja, 1  
(San Vicente de la Sonsierra)  
Telf. 941 334 200  
www.casonadelboticario.com

## 32 CASA RURAL LA ALAMEDA RIOJANA

C/ Mayor, 15 (Uruñuela)  
Telf. 616 164 551  
www.alamedariojana.com

## 33 CASA RURAL BOUTIQUE PALACIO CONDES DE CIRAC

C/ Carramonte, 19 B (Villalba de Rioja)  
Telf. 632 675 145  
www.palaciocondesdecirac.es

# WI- NE- RIES

## 1 BODEGAS ABEICA

Camino San Roque, 6 (Ábalos)  
Telf. 941 308 009  
www.bodegasabeica.com

## 2 BODEGAS ÓBALO

Ctra. N-232 a, km. 26 (Ábalos)  
Telf. 941 744 056 / 629 936 554  
www.bodegaobalo.com

## 3 BODEGAS PUELLES

Camino de los Molinos, s/n (Ábalos)  
Telf. 941 334 415  
www.bodegaspuelles.com

## 4 BODEGAS SOLANA DE RAMÍREZ RUIZ

C/ Arana, 24 (Ábalos)  
Telf. 941 308 049  
www.valsarte.com

## 5 BODEGAS Y VIÑEDOS SOLÁBAL

Trav. Camino San Bartolomé, 6 (Ábalos)  
Telf. 941 334 492  
www.solabal.es

## 6 BODEGAS DAVID MORENO

Ctra. a Villar de Torre, s/n (Badarán)  
Telf. 941 367 338  
www.davidmoreno.es

## 7 BODEGAS MARTÍNEZ ALESANCO

C/ José García, 20 (Badarán)  
Telf. 941 367 075  
www.bodegasmartínezalesanco.com

## 8 BODEGAS JUAN CARLOS SANCHA

Finca Fuentelacazuela  
Camino de las Barreras s/n  
(Baños del Río Tobía)  
Telf. 941 232 160 / 639 216 011  
www.juancarlosancha.com

## 9 BODEGAS TOBELOS

Ctra. N 124, km. 45 (Briñas)  
Telf. 941 305 630  
www.tobelos.com

## 10 BODEGA LA CUEVA DEL AMERICANO

C/ Acera del Medio, 5 (Briones)  
Telf. 661 618 358 / 661 618 359  
www.enbrionlacuevadelaamericano.com

## 11 BODEGAS BETOLAZA

C/ Cuesta Dulce, 12 (Briones)  
Telf. 663 473 444 / 650 862 104  
www.betolaza.es

## 12 BODEGAS VIVANCO

Crta. Nacional 232 (Briones)  
Telf. 941 322 323  
www.vivancoculturadevino.es

## 13 BODEGAS RUIZ ALFAYA: RUAL WINES

C. de la Carretera, 10 (Castilseco)  
Telf. 646 466 940  
www.rualwines.com

## 14 BODEGAS MARQUÉS DE CÁCERES

Avenida de Fuenmayor, 11 (Cenicero)  
Telf. 941 454 744 / 626 653 782  
www.marquesdecaceres.com

## 15 BODEGAS RIOJANAS

Avda. Don Ricardo Ruiz de Azcárraga, 1  
(Cenicero)  
Telf. 941 454 050  
www.bodegasriojanas.com

## 16 BODEGAS Y VIÑEDOS TRITIUM

Avda. de la Libertad, 9 (Cenicero)  
Telf. 629 152 822  
www.tritium.es

## 17 BODEGAS BOHEDAL

Ctra. Pancorbo. Camino de los Lirios, s/n  
(Cuzcurrita de Río Tirón)  
Telf. 941 328 064 / 681 099 899  
www.bohedal.com

## 18 BODEGA CASTILLO DE CUZCURRITA

C/ San Sebastián, 1  
(Cuzcurrita de Río Tirón)  
Telf. 941 328 022  
www.castillodecuzcurrita.com

## 19 BODEGAS TOBÍA

Paraje Senda Rutia, s/n  
(Cuzcurrita de Río Tirón)  
Telf. 941 301 789  
www.bodegastobia.com

## 20 BODEGAS ALTANZA

Ctra. Nacional 232 Km. 491,5  
(Fuenmayor)  
Telf. 941 450 860  
www.altanza.com

## 21 FINCA VALPIEDRA

Termino Montecillo, s/n (Fuenmayor)  
Telf. 941 450 876  
www.familiamartinezbujanda.com

## 22 BODEGAS COR DE MEI

C/ Zamudio, 2 (Gimileo)  
Telf. 657 273 479  
www.cordemei.com

## 23 BODEGAS SANTALBA

Avda. de La Rioja, s/n (Ctra. N-232,  
Km 445) (Gimileo)  
Telf. 941 304 231  
www.santalba.com

## 24 BODEGAS BILBAINAS VIÑA POMAL

C/ Estación, 3 (Haro)  
Telf. 941 310 147 / 683 676 579  
www.15bodegas.com/bodegas-bilbainas

## 25 BODEGAS CVNE

Avda Costa del Vino, 21 (Haro)  
Telf. 941 304 809  
www.cvne.com

## 26 BODEGAS GÓMEZ CRUZADO

Avda. Vizcaya, 6 (Haro)  
Telf. 941 312 502  
www.gomezacruzado.com

## 27 BODEGAS LA RIOJA ALTA

Avda. Vizcaya, 8 (Haro)  
Telf. 941 310 346  
www.riojalta.com

## 28 BODEGAS MANZANOS HARO

C/Prim 11 bajo, Haro  
Telf. 941 618 761  
www.bodegasmanzanos.com

## 29 BODEGAS MARTÍNEZ LACUESTA

Paraje de Ubietta, s/n (Haro)  
Telf. 941 310 050  
www.martinezlacuesta.com

## 30 BODEGAS MUGA

Barrio de la Estación, s/n (Haro)  
Telf. 941 306 060  
www.bodegasmuga.com

## 31 BODEGAS RAMÓN BILBAO

Avda. Sto Domingo, 34 (Haro)  
Telf. 941 310 316  
www.bodegasramonbilbao.es

## 32 BODEGAS RODA

Avda. Vizcaya, 5. Barrio de la Estación  
(Haro)  
Telf. 941 303 001  
www.roda.es

## 33 BODEGAS AYAGAR

Camino Valpierre, s/n (Hormilleja)  
Telf. 609 758 182 / 660 693 330  
www.bodegasayagar.es

## 34 BODEGA ARIZCUREN

C/ Santa Isabel, 10-12 (Logroño)  
Telf. 696 880 937  
www.arizcurenvinos.com

## 35 BODEGAS CAMPO VIEJO

Camino de Lapuebla de Labarca, 50  
(Logroño)  
Telf. 941 279 900  
www.campoviejo.com

## 36 BODEGAS MARQUÉS DE VARGAS

Ctra. de Zaragoza. Km. 6 (Logroño)  
Telf. 941 261 401  
www.marquesdevargas.com

## 37 HOPLITA HISTORIC WINES

C/ Herrerías 21, bajos 4-5 (Logroño)  
Telf. 609 922 024  
www.hoplitawines.com

## 38 VIÑA IJALBA

Ctra. Pamplona. Km. 1 (Logroño)  
Telf. 941 261 100 / 618 492 098  
www.ijalba.com

## 39 BODEGAS CORRAL

Ctra. de Logroño. Km.10 (Navarrete)  
Telf. 941 440 193  
www.bodegascorral.com

## 40 BODEGA FyA

Ctra. de Navarrete a Entrena LR-137  
Km1'5 (Navarrete)  
Telf. 941 560 560  
www.bodegasfy.com

## 41 BODEGAS MONTECILLO

Ctra. de Fuenmayor. Km. 3. Polígono  
Lentiscares. (Navarrete)  
Telf. 941 100 306  
www.bodegasmontecillo.com

## 42 BODEGAS BERONIA

Ctra. Ollauri-Nájera. Km.1,8 (Ollauri)  
Telf. 941 338 000 / 653 910 390  
www.beronia.es

## 43 BODEGAS VALENCISO

Ctra. Ollauri-Nájera. Km. 0,4 (Ollauri)  
Telf. 941 304 724  
www.valenciso.com

## 44 BODEGA EL ARCA DE NOÉ

C/ Victor Cardenal, 71 (San Asensio)  
Telf. 941 457 231  
www.bodegaelarcadenoe.com

## 45 BODEGA SAN CEBRÍN

Ctra. Circunvalación, s/n (San Asensio)  
Telf. 941 457 640  
www.sancebrin.com

## 46 BODEGAS ALFONSO

**GARCÍA HERNANDO**  
C/ Victor Cardenal, 64 (San Asensio)  
Telf. 941 457 257 / 607 990 895  
www.bodegasalfonsogarciahernando.es

## 47 BODEGAS LECEA

Las Cuevas, 246. Barrio de la Bodega  
(San Asensio)  
Telf. 685 010 400  
www.bodegaslecea.com

## 48 BODEGAS PERICA

Avda. de La Rioja, 59 (San Asensio)  
Telf. 941 457 152  
www.bodegasperica.com

## 49 BODEGAS SEÑORÍO DE LA ESTRELLA

Ctra. N-232, s/n (San Asensio)  
Telf. 941 457 133  
www.senoriodelaestrella.es

## 50 BODEGA HACIENDA LÓPEZ DE HARO

Camino del Cementerio, s/n  
(San Vicente de la Sonsierra)  
Telf. 676 393 955  
www.haciendalopezdeharo.com

## 51 BODEGAS RAMÍREZ DE LA PISCINA

Ctra. Logroño-Vitoria, s/n  
(San Vicente de la Sonsierra)  
Telf. 941 334 505 / 616 917 943  
www.ramirezdelapiscina.com

## 52 BODEGAS SONSIERRA COOP.

C/ Paseo Logroño, 3  
(San Vicente de la Sonsierra)  
Telf. 941334031  
www.sonsierra.com

## 53 BODEGAS Y VIÑEDOS CARLOS MORO

Camino Garugele, s/n  
(San Vicente de la Sonsierra)  
Telf. 941 334 093 / 674 353 715  
www.bodegacarlosmoro.com

## 54 HACIENDA EL TERNERO

Finca El Ternero (Ternero)  
Telf. 941 320 021  
www.elternero.com

## 55 BODEGAS TARÓN

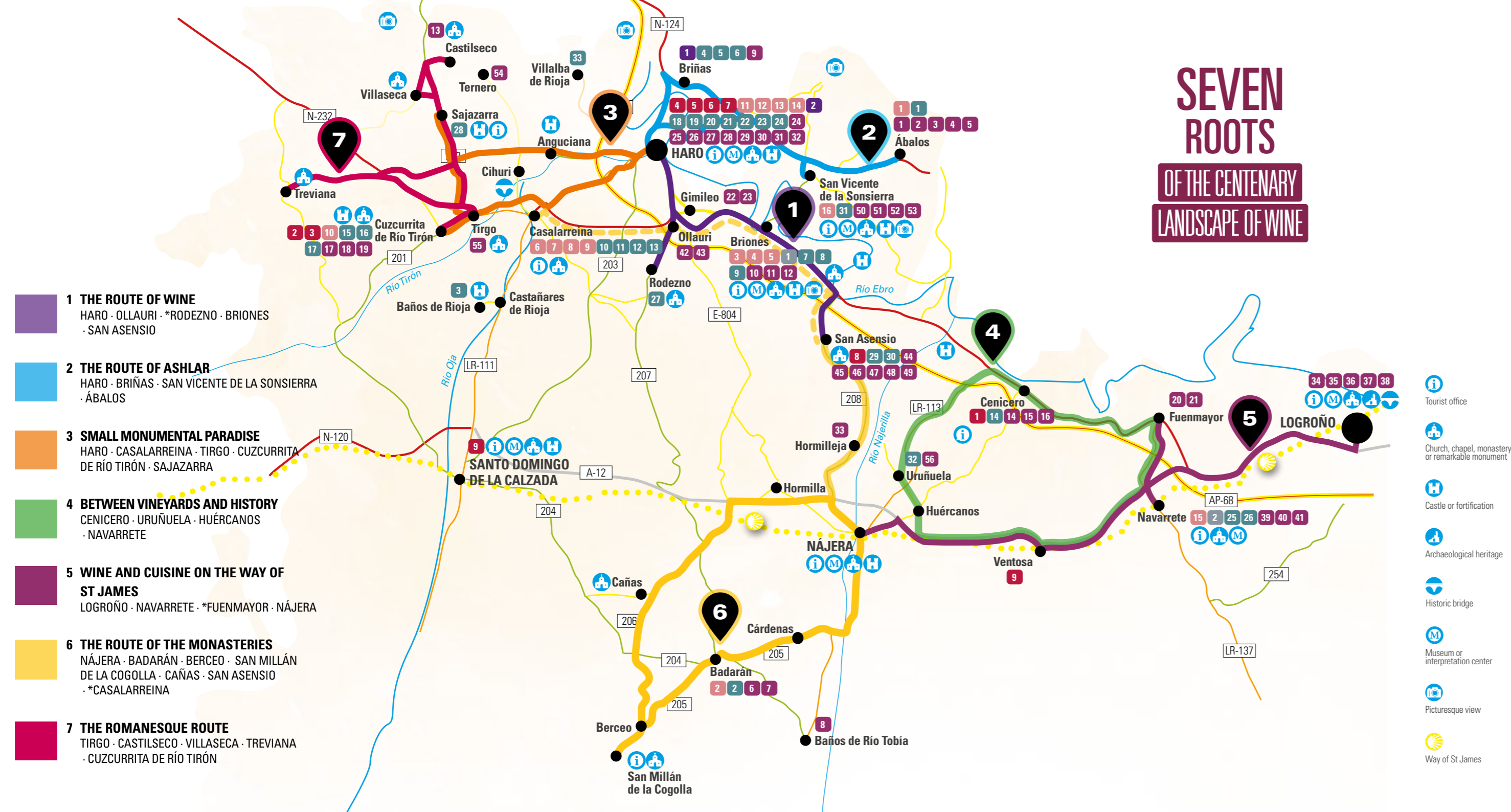
Ctra. de Miranda, s/n (Tirgo)  
Telf. 941 301 650  
www.bodegastaron.com

## 56 BODEGAS ZINIO

Ctra. Cenicero, s/n (Uruñuela)  
Telf. 941 371 319  
www.ziniobodegas.com

# SEVEN ROOTS

## OF THE CENTENARY LANDSCAPE OF WINE



- 1 THE ROUTE OF WINE**  
HARO · OLLAURI · \*RODEZNO · BRIONES · SAN ASENSIO
- 2 THE ROUTE OF ASHLAR**  
HARO · BRIÑAS · SAN VICENTE DE LA SONSIERRA · ÁBALOS
- 3 SMALL MONUMENTAL PARADISE**  
HARO · CASALARREINA · TIRGO · CUZCURRITA DE RÍO TIRÓN · SAJAZARRA
- 4 BETWEEN VINEYARDS AND HISTORY**  
CENICERO · URUÑUELA · HUÉRCANOS · NAVARRETE
- 5 WINE AND CUISINE ON THE WAY OF ST JAMES**  
LOGROÑO · NAVARRETE · \*FUENMAYOR · NÁJERA
- 6 THE ROUTE OF THE MONASTERIES**  
NÁJERA · BADARÁN · BERCEO · SAN MILLÁN DE LA COGOLLA · CAÑAS · SAN ASENSIO · \*CASALARREINA
- 7 THE ROMANESQUE ROUTE**  
TIRGO · CASTILSECO · VILLASECA · TREVIANA · CUZCURRITA DE RÍO TIRÓN

- Tourist office
- Church, chapel, monastery or remarkable monument
- Castle or fortification
- Archaeological heritage
- Historic bridge
- Museum or interpretation center
- Picturesque view
- Way of St James

### ESTABLISHMENTS OF THE RIOJA ALTA WINE ROUTE

- |                             |   |                             |   |
|-----------------------------|---|-----------------------------|---|
| <b>EXPERIENCES</b>          |   | <b>RESTAURANTS</b>          |   |
| Cenicero                    | <b>1</b> Bodega Calado 1880                           | Ábalos                      | <b>1</b> Villa de Ábalos                  |
| Cuzcurrita de Río Tirón     | <b>2</b> Globos Arcoiris                              | Badarán                     | <b>2</b> Conde de Badarán                 |
| Haro                        | <b>3</b> La Bodega del Tesoro                         | Briones                     | <b>3</b> Allegar                          |
|                             | <b>4</b> Grape Aventura                               |                             | <b>4</b> Los Calaos de Briones            |
|                             | <b>5</b> Lácteos Martínez - Queso Los Cameros         | Casalarreina                | <b>5</b> Vivanco                          |
|                             | <b>6</b> Oja Sport                                    |                             | <b>6</b> Entrerañles                      |
|                             | <b>7</b> Rioja Rent a Car                             |                             | <b>7</b> La Vieja Bodega                  |
| San Asensio                 | <b>8</b> Rioja Wine Trips                             |                             | <b>8</b> Lumbre                           |
| Ventosa                     | <b>9</b> Explotaciones Apícolas Campo Miel            | Cuzcurrita de Río Tirón     | <b>9</b> Otium Restaurante                |
| <b>WINE CELLARS</b>         |   | Haro                        | <b>10</b> Aker                            |
| Brías                       | <b>1</b> Junguito ¿Hablamos de Vino?                  |                             | <b>11</b> Arrope                          |
| Haro                        | <b>2</b> Selección Vinos Isabel Gutiérrez Ortiz       | San Vicente de la Sonsierra | <b>12</b> Beethoven                       |
| <b>MUSEUMS</b>              |   | Uruñuela                    | <b>13</b> El Claustro de los Agustinos    |
| Briones                     | <b>1</b> Museo Vivanco de la Cultura del Vino         |                             | <b>14</b> Nublo                           |
| Navarrete                   | <b>2</b> Museo Bodegas FYA                            | Navarrete                   | <b>15</b> El Figón del Duque              |
| <b>LODGINGS</b>             |   | San Vicente de la Sonsierra | <b>16</b> Casa Toni                       |
| Ábalos                      | <b>1</b> Hotel Restaurante Villa de Ábalos            | <b>WINERIES</b>             |   |
| Badarán                     | <b>2</b> Hotel Conde de Badarán                       | Ábalos                      | <b>1</b> Bodegas Abeica                   |
| Baños de Rioja              | <b>3</b> Casa Rural Medieval Torre Fuerte Siglo XIII  |                             | <b>2</b> Bodegas Óbalo                    |
| Brías                       | <b>4</b> Casa Rural Legarda                           |                             | <b>3</b> Bodegas Puelles                  |
|                             | <b>5</b> Hospedería Señorío de Brías                  | Badarán                     | <b>4</b> Bodegas Solana de Ramírez Ruiz   |
|                             | <b>6</b> Hotel Portal de La Rioja                     |                             | <b>5</b> Bodegas y Viñedos Solábal        |
|                             | <b>7</b> Casa Rural El Mesón                          | Baños de Rioja              | <b>6</b> Bodegas David Moreno             |
|                             | <b>8</b> Hotel Los Calaos de Briones                  |                             | <b>7</b> Bodegas Martínez Alesanco        |
|                             | <b>9</b> Hotel Santa María de Briones                 | Brías                       | <b>8</b> Bodegas Juan Carlos Sancha       |
|                             |   |                             | <b>9</b> Bodegas Tobelos                  |
|                             |   | Briones                     | <b>10</b> Bodega La Cueva del Americano   |
|                             |   |                             | <b>11</b> Bodegas Betolaza                |
|                             |   |                             | <b>12</b> Bodegas Vivanco                 |
|                             |   | Castilseco                  | <b>13</b> Bodegas Ruiz Alfaya: Rual Wines |
|                             |   | Cenicero                    | <b>14</b> Bodegas Marqués de Cáceres      |
|                             |   |                             | <b>15</b> Bodegas Riojanas                |
|                             |   |                             | <b>16</b> Bodegas y Viñedos Tritium       |
| Casalarreina                | <b>10</b> Hospedería Señorío de Casalarreina          | Cuzcurrita de Río Tirón     | <b>17</b> Bodegas Bohedal                 |
|                             | <b>11</b> Hotel Entrerañles                           |                             | <b>18</b> Bodega Castillo de Cuzcurrita   |
|                             | <b>12</b> Hotel Valle del Oja                         | Fuenmayor                   | <b>19</b> Bodegas Tobía                   |
|                             | <b>13</b> Natura Resorts                              |                             | <b>20</b> Bodegas Altanza                 |
| Cenicero                    | <b>14</b> Aptos. Turísticos Rioja Valley              |                             | <b>21</b> Finca Valpiedra                 |
| Cuzcurrita de Río Tirón     | <b>15</b> Aptos. Rivera del Tiron                     | Gimileo                     | <b>22</b> Bodegas Cor de Mei              |
|                             | <b>16</b> Casa Rural La Viña                          |                             | <b>23</b> Bodegas Santalba                |
|                             | <b>17</b> Teatrissa Hotel Palacio                     | Haro                        | <b>24</b> Bodegas Bilbainas Viña Pomal    |
| Haro                        | <b>18</b> Aptos. Turísticos Beethoven                 |                             | <b>25</b> Bodegas CVNE                    |
|                             | <b>19</b> Hotel Arrope                                |                             | <b>26</b> Bodegas Gómez Cruzado           |
|                             | <b>20</b> Hotel Plaza de La Paz                       |                             | <b>27</b> Bodegas La Rioja Alta           |
|                             | <b>21</b> H. Eurostars Los Agustinos 4*               |                             | <b>28</b> Bodegas Manzanos Haro           |
|                             | <b>22</b> Pura Cepa Urban Suites                      |                             | <b>29</b> Bodegas Martínez Lacuesta       |
|                             | <b>23</b> Tinto Dreams Hostel                         |                             | <b>30</b> Bodegas Muga                    |
|                             | <b>24</b> Wine & Soul Suites                          |                             | <b>31</b> Bodegas Ramón Bilbao            |
| Navarrete                   | <b>25</b> Bodega Hotel FyA                            |                             | <b>32</b> Bodegas Roda                    |
|                             | <b>26</b> Posada Ignatius                             | Hormilleja                  | <b>33</b> Bodegas Ayagar                  |
| Rodezno                     | <b>27</b> Casa Rural El Mirador de Eloísa             |                             | <b>34</b> Bodega Arizcuren                |
| Sajazarra                   | <b>28</b> Hotel Posada de Sajazarra                   | Logroño                     | <b>35</b> Bodegas Campo Viejo             |
| San Asensio                 | <b>29</b> Hotel Rural Mar De Viñas                    |                             | <b>36</b> Bodegas Marqués de Vargas       |
|                             | <b>30</b> Hotel La Capellanía                         |                             | <b>37</b> Hoplita Historic Wines          |
| San Vicente de la Sonsierra | <b>31</b> Hotel Casona del Boticario                  |                             | <b>38</b> Viña Ijalba                     |
| Uruñuela                    | <b>32</b> Casa Rural la Alameda Riojana               | Navarrete                   | <b>39</b> Bodegas Corral                  |
| Villalba de Rioja           | <b>33</b> Casa Rural Boutique Palacio Condes de Cirac |                             | <b>40</b> Bodegas FyA                     |
|                             |   |                             | <b>41</b> Bodegas Montecillo              |
|                             |   | Ollauri                     | <b>42</b> Bodegas Beronia                 |
|                             |   |                             | <b>43</b> Bodegas Valenciso               |
|                             |   | San Asensio                 | <b>44</b> Bodega El Arca de Noé           |
|                             |   |                             | <b>45</b> Bodega San Cebrián              |
|                             |   |                             | <b>46</b> Bodegas Alfonso García Hernando |
|                             |   |                             | <b>47</b> Bodegas Lecea                   |
|                             |   |                             | <b>48</b> Bodegas Perica                  |
|                             |   |                             | <b>49</b> Bodegas Señorío de la Estrella  |
|                             |   |                             | <b>50</b> Bodega Hacienda López de Haro   |
|                             |   |                             | <b>51</b> Bodegas Ramírez de la Piscina   |
|                             |   |                             | <b>52</b> Bodegas Sonsierra Coop.         |
|                             |   |                             | <b>53</b> Bodegas y Viñedos Carlos Moro   |
|                             |   | Ternero                     | <b>54</b> Hacienda El Ternero             |
|                             |   |                             | <b>55</b> Bodegas Tarón                   |
|                             |   | Uruñuela                    | <b>56</b> Bodegas Zinio                   |

## TOURIST OFFICES

### LOGROÑO

Calle Portales, 50  
Escuelas Trevijano  
T. 941 29 12 60

### HARO

Plaza de la Paz, 1  
T. 941 30 35 80

### BRIONES

Calle San Juan, 19  
T. 608 03 68 56

### NAVARRETE

Cuesta el Caño  
T. 941 44 10 62

### NÁJERA

Paseo San Julián, 4  
T. 941 74 11 84

### SAN VICENTE DE LA SONSIERRA

Plaza Mayor, 1. Ayuntamiento.  
T. 941 33 40 06

### CENICERO

Plaza de España, 12  
T. 941 45 40 16

### SAJAZARRA

Calle del Río, 4  
T. 689 24 70 69

### CASALARREINA

Plaza Sto. Domingo de Guzmán, 5  
Monasterio de la Piedad  
T. 619 09 82 23



Ruta del Vino  
 *Rioja Alca*

 **La Rioja**  
lariojaturismo.com

 **vinodEspaña**  
RUTAS



'GOURMAND Awards. World Cookbook Awards 2021'. Best Spanish publication, category 'World of Wine. Drink Tourism'

[www.rutasdelvinorioja.com](http://www.rutasdelvinorioja.com)

